

Fashion Sports Portable MP3 Recording Bracelet

User's guidance

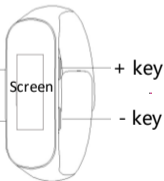
Please read this user guide carefully before use

This machine must be charged with 5V voltage, if 9V fast charge is used, it may cause the machine to burn out



Headphone jack/
charging jack/
data cable jack

ON/OFF



+ key

- key

● Recording function

Recording: Do not plug in the earphone, push the switch to the ON position, the recording interface will appear on the screen, and enter the recording state; after recording, when the screen is off, you can press the "+" key (or "-" key) to check the time, and **long press** the "+" key (or "-" key) on the time interface to enter the recording interface.

Saving: Push the switch to the OFF position to save the recording file and shut down.

(After saving the recording and turning it off, you can turn it on quickly to play the file just recorded)

★Note: During the recording process, do not connect to the computer, otherwise the files being recorded will be lost due to errors.

● Play function

Playback: ①plug in headphones, ②Push the switch to the ON position to enter music playback;

Pause: In the playback state, short press the "+" key and "-" key at the same time to pause, and short press the "+" button (or "-" button) to exit the pause;

Track switch: During the playback state, short press the "+" key or "-" key to switch between the previous and next songs;

Volume adjustment: During the playback state, long press the "-" key to enter the volume adjustment interface, short press the "-" key to increase the volume, and long press the "-" button to decrease the volume;

Menu function: During the playback state, long press the "+" key to enter the menu function.

Fast forward and fast backward (requires power off and then power on again)

Fast forward and backward settings: Plug in the headphones, push the switch to the ON position, and then press and hold the "+" button until the playback starts;

Fast forward and backward: Long press the "+" button to rewind, long press the "-" button to fast forward.

★ If you want to use it, you need to set it every time. In this state, there is no volume adjustment and no menu function.

● Menu function

During the playback state, long press the "+" button to enter the menu function. Press "-" key to select, press "+" key to confirm.

Time setting	Change the machine time
Sound setting	Play effect settings, set volume/variable speed playback/equalizer
Recording settings	Recording effect settings, recording format/bit rate/voice activated mode
Delete	delete the currently playing file
Screensaver mode	Choose from different screensavers
Exit	Exit the menu interface

Time setting

After entering [Menu Function]-[Time Setting], press the "+" key to switch the setting items, and press the "-" key to set the time. If you do not modify it, it will save and exit after 5 seconds automatically.

Sound Setting

1/ set the volume

Short press the "-" button to increase the volume, long press the "-" button to decrease the volume, and press the "+" button to confirm.

2/ Variable speed playback

Short press the "-" key to accelerate, long press the "-" key to decelerate, and press the "+" key to confirm.

3/Equalizer

Short press the "-" key to select different playback effects
<rock/funk/hiphop/jazz/classical/electronic music/custom> to listen to music, and press the "+" key to confirm.

Recording setting

1/Recording format (the file format which the recording is saved)

MP3: general effect, compression processing, need small memory space

WAV: better effect, no compression, takes up a lot of memory space

2/Bitrate

Set the resolution of the recording, the higher the bit rate, the better the effect, and the more memory it takes up

3/Voice activated mode

The voice activated mode is recorded with sound, and stop recording without sound, so as to achieve the purpose of saving memory. After turning on the voice activated mode, unplug the headphones and restart the recording, which is the voice activated recording.

4/Recording scene

Select the corresponding recording scene to perform noise reduction to improve the recording quality.

5/Recording segment

Set the duration of a single recording file, for example, select 10min (minutes), that is, a file will be saved every 10 minutes of recording. Short press the "-" button to increase the duration, long press the "-" button to decrease the duration, and press the "+" button to confirm.

Delete

The file being deleted is the currently playing file. It is recommended to pause and then enter the menu and select delete to avoid accidental deletion.

● Time function

Watch function

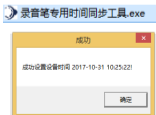
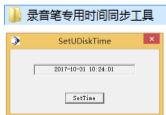
When power off, the screen will display <shutdown image>, at this time, short press the "+" button to select <clock image> to enable the watch function, and short press the "+" button or "-" button to check the time in the shutdown state.

★Note: In order to save power, the time will not be displayed all the time. if need to check the time, short press the "+" key or "-" key.

Time setting

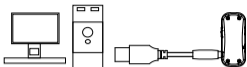
1/ **Local setting: check the time setting details in the menu function**

2/ **Setting on the PC:** Connect the machine to the computer, enter the disk, you can see a folder named <Time synchronization tool>, copy this folder to the desktop, open the folder, double-click <SET DISK TIME>, as shown in the figure to confirm whether the computer time is accurate, click <SetTime>, as shown in the figure, indicating that the time synchronization is successful.



★If need format the machine,
Please back up this folder,
prevent loss.

● Charging the machine/connecting to the computer



Insert the data cable into the headphone jack of the machine. When inserting it, insert it with a little force to the end without leaving a gap (turning the data head when inserting is more labor-saving)

The charging voltage is 5V, and it is also charging while transmitting data!

1/Insert the data cable into the headset/charging/data hole of the machine, and then connect it to the computer or charger to charge. It is recommended to use a USB data cable to connect this machine to a computer for charging.

2/ Please use a power adapter with a charging **current of 1A or less** for charging, otherwise it may damage the unit or cause danger (this product is not equipped with a power adapter).

3/ In the charging state, the power box in the upper right corner of the recorder screen will jump; in full state, the power box in the upper right corner of the recorder screen will no longer jump.

4/ After connecting to the computer, the machine can be used as a U disk function to play the machine's recording files or delete files in batches.

● Function parameter

product type	bracelet voice recorder	4GB	Can be stored for 48 hours recording files
Recording method	Record -Power on, save -power off	8GB	Can be stored for 96 hours recording files
Battery	Environmentally friendly polymer lithium battery	16GB	Can be stored for 192 hours recording files
charging time	about 1 hour	32GB	Can be stored for 384 hours recording files
Sampling Rate	48KHz	bit rate	256Kbps-1536Kbps
Recording format	MP3/WAV	Play format	MP3/WMA/WAV

● Precautions

1/ When charging or connecting to a computer, turn the switch to the "OFF" position. When unplugging, wait for the screen to turn off before using it.

2/ After recording, no matter whether the recording pen has power or not, you must turn the switch to the "OFF" position first to save the recording file, otherwise the recording file will be lost.

● Q&A

1/Suddenly can't record

Please back up important files and format them on the computer. If they can be used normally after formatting, please clean up the computer in time. In this case, the computer virus infects the recorder and causes the recorder to be unusable. It may take a long time. The machine will be damaged beyond repair.

2/ The screen does not respond or is always on in an abnormal state

Please back up important files first, and then restore the factory settings. After connecting to the computer, click My Computer, find the mobile drive letter, right-click the mouse, select Format, and then select Quick Format. In this way, the factory reset can be completed, and most faults can be eliminated.

3/No response after connecting to the computer through the data cable

First check whether the plug is inserted properly. If the computer still does not respond, try to connect to a different computer. Some computers cannot be recognized due to lack of drivers. If it is still not recognized after trying, you can contact after-sales upgrade or after-sales service.

★ ★ ★ This machine comes with an intelligent reset system, please save the file being recorded before connecting to the computer.

Because the recording effect and sound quality of this product are relatively clear and the parameters are relatively high, the recording file is relatively large, please extract it in time, and the company is not responsible for the loss of data.