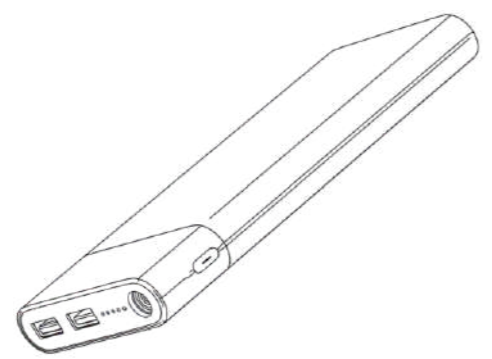


Quick Installation Guide Smart Power Bank Cam

1.Packing List

Open the package, then make sure the WiFi Camera(device) is intact, and with all the below accessories.



1 x Smart Power bank Camera



1 x Power Cable

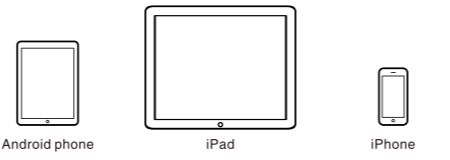


1 x Quick Installation Guide

2.Preparation

Please prepare the below stuff before you use it.

One smartphone or tablet PC(Mac or Windows PC is not acceptable) with IOS 6.0 or Android 4.0 system(higher version system is acceptable)



Wi-Fi Router

- Device can only connect to 2.4Ghz Wi-Fi router.
- Make sure turn on the DHCP of router, and MAC address should be off.
- Distance between the router and the device should be within 3 mtrs during configuration.
- Please don't use special character such as Chinese, symbol to name the WiFi.
- Please don't use special character such as Chinese, symbol as the password for the WiFi and Wi-Fi password can not be blank.



Install "IOTLiving" App

- Search "IOTLiving" App from Apple Store or Google Play, then download.
- Scan the QR Code below and install the App.

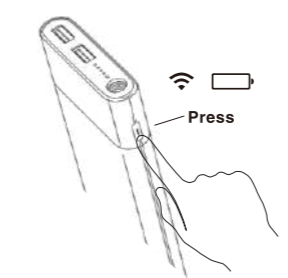
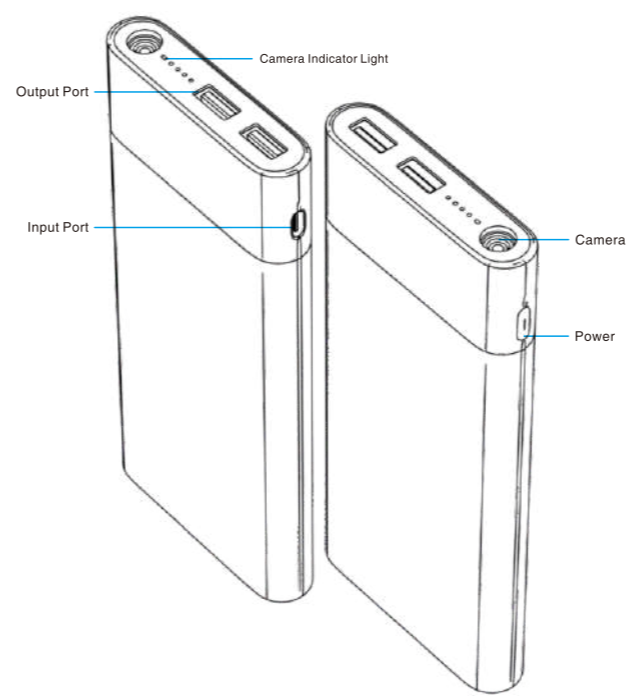


IOS APP

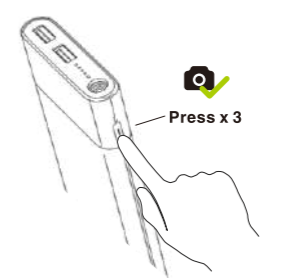


Android APP

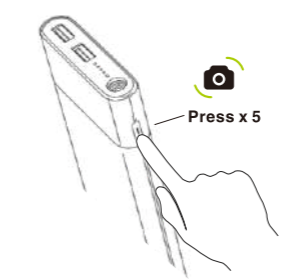
3.Operation Instruction (please read, IMPORTANT!)



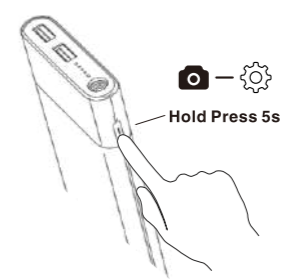
1.Press"power"to enter the battery indicator states and camera WiFi indicator states.



2.Quickly press"power"3 times to enter camera turn on.

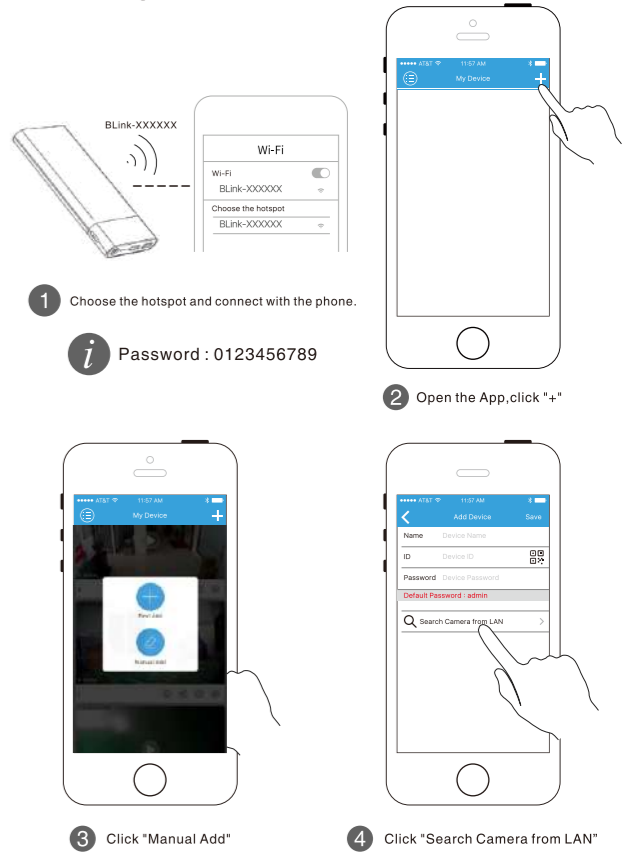


3.Quickly press"power"5 times to enter camera turn on.



4.Long press"power"and hold for 5 seconds to enter the camera reset.

4.Configure Device



1 Choose the hotspot and connect with the phone.

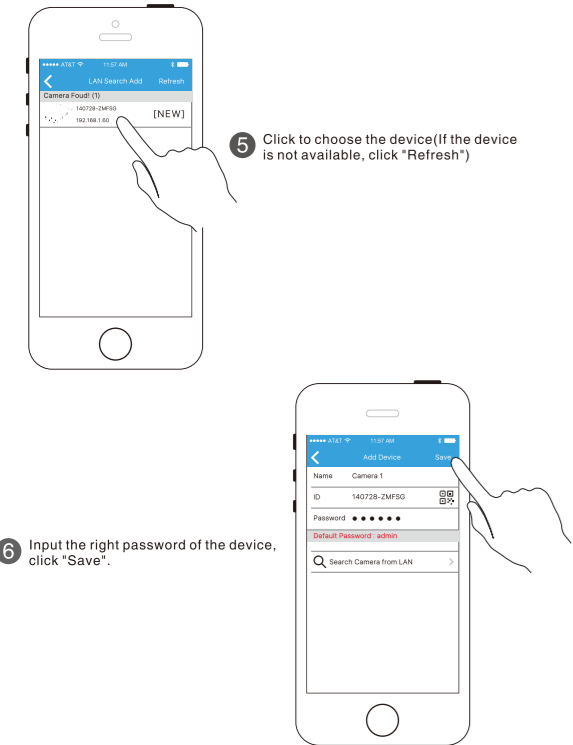
2 Password : 0123456789

2 Open the App,click "+"

3 Click "Manual Add"

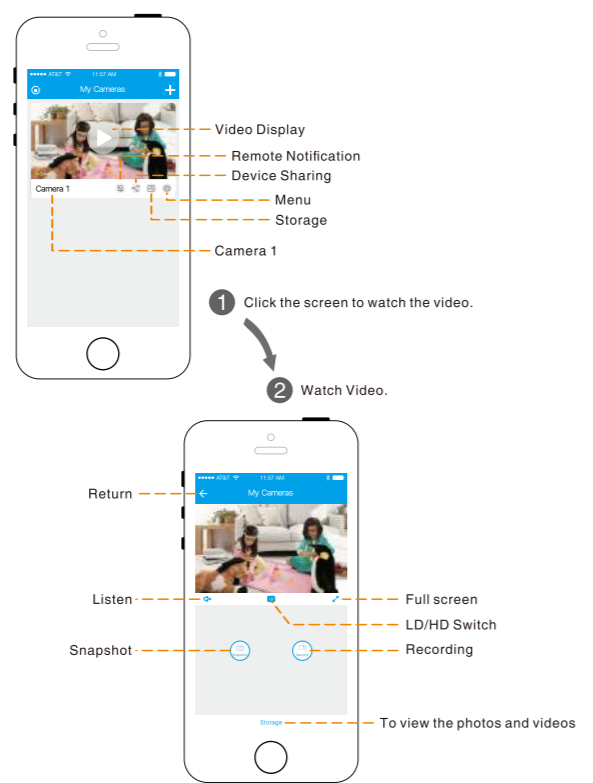
4 Click "Search Camera from LAN"

5.Watch Video



5 Click to choose the device(If the device is not available, click "Refresh")

6 Input the right password of the device, click "Save".

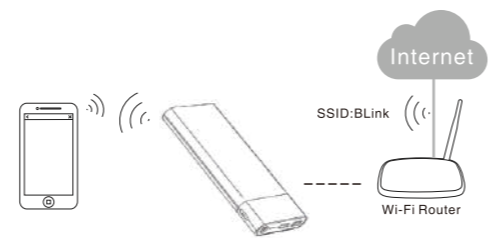


1 Click the screen to watch the video.

2 Watch Video.

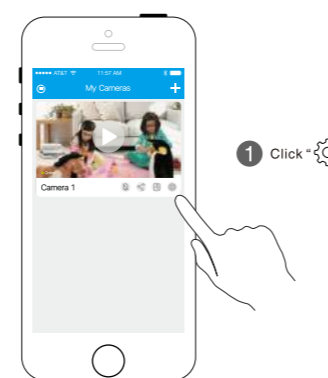
Return
Listen
Snapshot
Full screen
LD/HD Switch
Recording
To view the photos and videos

6.Connect device to the WiFi router



- Make sure the Wi-Fi is connected to Internet.
- Make sure the smart phone/tablet PC are in same Lan.
- Make sure to input right password.

Open App go to watch the video interface

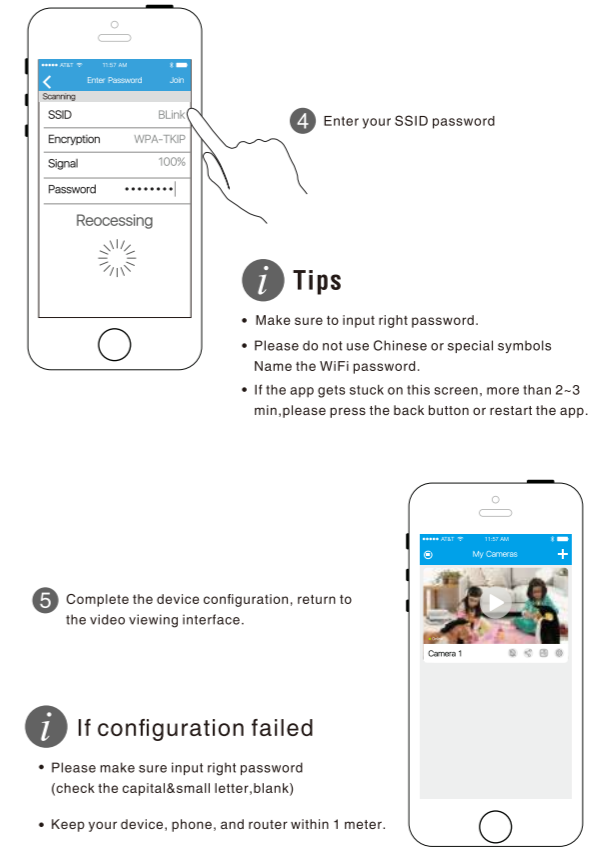
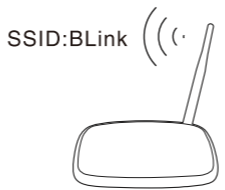


1 Click "Settings".



2 Chose WiFi Setting

3 Select the router SSID you need to add



Tips

- Make sure to input right password.
- Please do not use Chinese or special symbols Name the WiFi password.
- If the app gets stuck on this screen, more than 2-3 min,please press the back button or restart the app.

If configuration failed

- Please make sure input right password (check the capital&small letter,blank)
- Keep your device, phone, and router within 1 meter.

About the User Manual:

The user manual is used as a guide. The photos, graphic, charts and illustrations provided in the user Manual are only used to explanation and interpretation, which may be different from specific products, please refer to the real object. The user manual maybe updated because of the products version upgrade or other requirements, if you need the latest version of the user manual, please contact customer service for the latest version of the user manual.