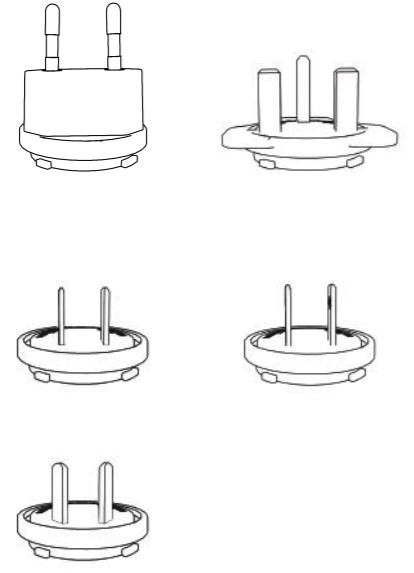


Quick Installation Guide Fast Wall Charger Camera

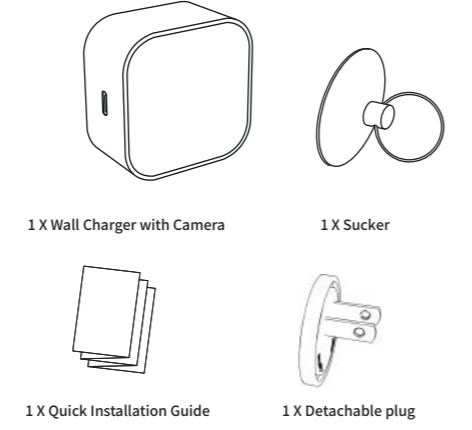
REV 1.0



The above replacement plug-in is a display pattern, the accessories are based on the actual order.

1.Packing List

Open the package, then make sure the WiFi Camera(device) is intact,and includes all the accessories below.



(The plug accessories are mainly based on the products actually you purchase)

2.Preparation

Please prepare the items below before you using them.

You will need: one smartphone or tablet PC with IOS12.0 or Android 8.0 or higher. (Mac or windows PC is not compatible)



Wi-Fi Router

- Device can only connect to a 2.4Ghz Wi-Fi router.
- Make sure to turn on the DHCP of the router,and the MAC address should be off.
- Distance between the router and the deviceshould be within 3 meters during configuration.
- The WiFi password can not be blank and can not contain



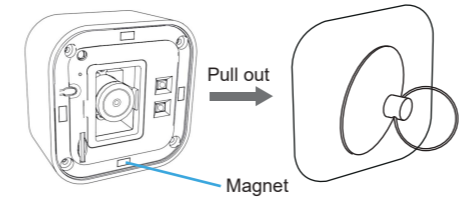
3.App Installation

Please prepare the items below before you using them.

- 1.Download app from Apple Store/Google Play.
- 2.Or scan the QR code card to download this app.

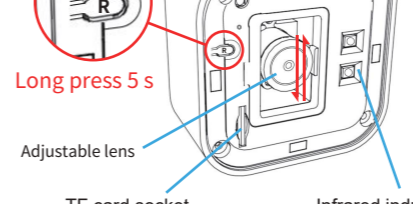
4. Please reset the device

- 1 Remove the glass mirror with a sucker
- 2 Plug the device into the socket



5.Configure Device

Press the reset button

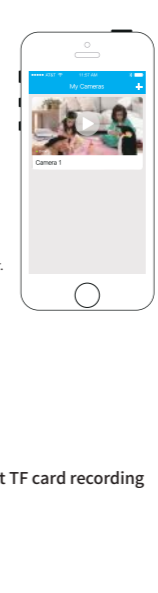


Adjustable lens
TF card socket (No TF Card include)
Infrared induction

- 1 Choose the hotspot "BLINK-XXXXXX" and connect with the phone.
- 2 Open the App.click "+"

6.Watch Video

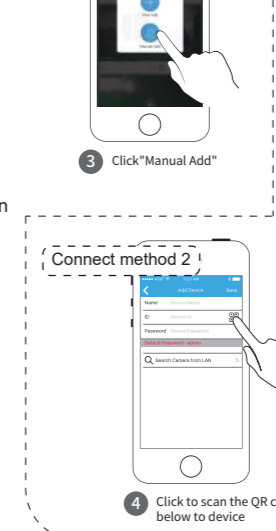
- 1 Click the Menu
- 2 Watch Video



Return
Listen
Snapshot
Full screen
LD/HD Swich
Recording
To view the photos and vidros

7.modify device password

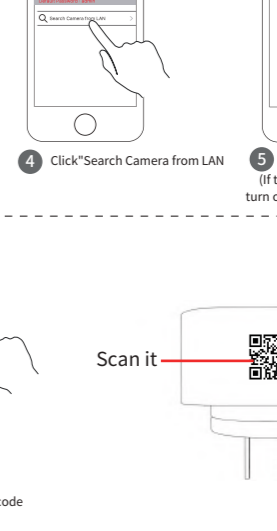
Click the Menu



- 1 Select modify device password Default password: admin
- If you forget your password , please reset the device (Does not affect the data of the SD card)

8.Connect device to the WiFi router

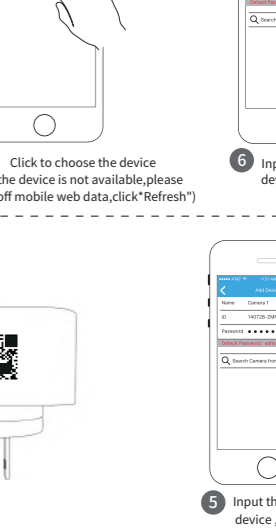
Distance 3-5 m
ONLY works with 2.4Ghz network



1. Continue with the previous operation.
2. The product is away from the router 3-5 m.
3. Open the APP>>Settings>>Network Information(WIFI)>>Wi-Fi manage>>Find Your Router SSID >>Enter Router SSID Password.

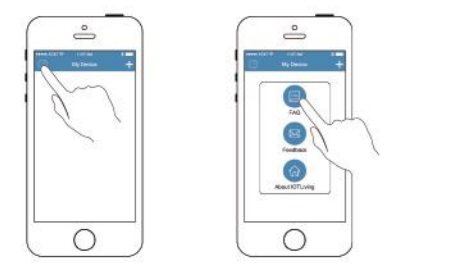
9. More user in same device, (add more users in same Lan)

Internet
2.4G Wi-Fi



- 1 Open App, Click "+"
- 2 Click "Manual Add"
- 3 Click "LAN Search Add"
- 4 Click to choose the device (If the device is not available, click "Refresh")
- 5 Input the right password of the device, click "Save"

For more questions, please open App and click "FAQ"



- 1 Open the App, then click "FAQ"
- 2 Click "FAQ" enter FAQ page

About the User Manual:

The user manual is used as a guide. The photos,graphics,charts and illustrations provided in the UserManual are only used for explanation and interpretation,which may be different from specific products,please refer to the real object. The User Manual may be updated because of the products version upgrade or other requirements,if you need the latest version of the user manual, please contact customer service.

FCC Caution:

This device complies with part 15 of the FCC Rules. Operation is subject to the following two conditions:
 (1) this device may not cause harmful interference
 (2) this device must accept any interference received, including interference that may cause undesired operation.
 Any changes or modifications not expressly approved by the party responsible for compliance could void the user's authority to operate the equipment.
 NOTE: This equipment has been tested and found to comply with the limits for a Class B digital device, pursuant to Part 15 of the FCC Rules. These limits are designed to provide reasonable protection against harmful interference in a residential installation. This equipment generates, uses and can radiate radio frequency energy and, if not installed and used in accordance with the instructions, may cause harmful interference to radio communications. However, there is no guarantee that interference will not occur in a particular installation. If this equipment does cause harmful interference to radio or television reception, which can be determined by turning the equipment off and on, the user is encouraged to try to correct the interference by one or more of the following measures:
 --Reorient or relocate the receiving antenna.
 --Increase the separation between the equipment and receiver.
 --Connect the equipment into an outlet on a circuit different from that to which the receiver is connected.
 --Consult the dealer or an experienced radio/TV technician for help.
 To maintain compliance with FCC's RF Exposure guidelines, This equipment should be installed and operated with minimum distance between 20cm the radiator your body: Use only the supplied antenna.

FCC ID: 2AL56GF-AC100